



Lake Forest Park Lakefront Improvements

Design, Engineering, Environmental, and Permitting

D|C|G

WATERSHED

Schedule overview

NTP received July 11, 2023

Predesign (July to October):

- Data Collection
- Site Analysis
- Early Engagement

Concept Design (October to January):

- Design programming
- Alternatives development
- Feasibility analysis
- Permit mapping
- Cost estimation

Alternatives Analysis (January to March):

- Presentation of alternatives
- Refinement
- Selection of preferred design

Schematic Design (March to June):

- Advance preferred design
- Preparation and delivery of schematic design package

Design Development – *targeting NTP in June 2024*

Progress report

Predesign (July to October):

- **Data Collection**
- Site Analysis
- Early Engagement

Completed:

Wetland and stream reconnaissance and delineation

Shoreline condition and waterfront structures assessment

Architectural evaluation

Landscape and site assessment

Preliminary cultural investigation

Background data review

Progress report

Predesign (July to October):

- Data Collection
- [Site Analysis](#)
- Early Engagement

Completed:

Data compilation base map, using existing inventories

Initial regulatory review

Working sessions:

- Project framing / Pre-design Meeting
- Placemaking / Interpretive Workshop

Project study area boundary determined:

- Arborist inventory underway
- Wetland delineation flagging underway
- Survey and detailed cultural resource evaluation pending

Site analysis map



Progress report

Predesign (July to October):

- Data Collection
- Site Analysis
- **Early Engagement**

Completed:

Project website

- Listserv sign-up
- Open comment form
- Virtual site tour

Outreach

- Postcard mailing
- Poster distribution
- Enews campaign
- Social media posts

Engagement activities

- Predesign survey
- Parks and Recreation Advisory Board (PRAB) meeting
- Direct engagement
- Tabling at community events
- Community Workshop (predesign charette)



Promotions

Website

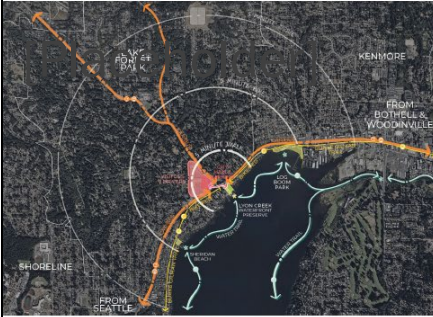
- ~780 unique visitors
- 50/50 desktop/mobile
- 90% direct click, 5% redirect from city website
- 96 individuals on listserv

Postcard mailing: 4,733 sent

Enews: citywide distribution

Engagement survey

LAKE FOREST PARK LAKEFRONT PARK



You can shape the vision for Lake Forest Park's public lakefront.

The Lake Forest Park Mayor and City Council have established improving public waterfront access as a high priority. This project was identified as a high priority in the City's Parks, Recreation, Open Space and Trails (PROST) plan.

The City of Lake Forest Park has acquired 2 parcels, totaling 1.91 acres, on the shores of Lake Washington. This land is located near the Town Center, Burke-Gilman Trail, and adjacent to the scenic Lyon Creek Waterfront Preserve. As of now, the City lacks public water access, and this project aims to provide the community with active water recreation opportunities in a beautiful area.

This multi-year effort requires community participation and input. Look out for opportunities to get involved or sign up at the website below to receive email updates.

lfplakefrontpark.com



LAKE FOREST PARK LAKEFRONT PARK

You can shape the vision for Lake Forest Park's public lakefront.

The city and its consultants are embarking on the design of a new public waterfront that will feature expanded park and community space.

Visit the website to find out more and to learn how you can participate in the design and planning process.

lfplakefrontpark.com



Top: City map showing project location and adjacent streets, pedestrian, and bicycle routes. Bottom: Aerial photo of project location facing east.

Estimated Project Schedule

2023	2024	2025	2026
7 8 9 10 11 12	1 2 3 4 5 6 7 8 9 10 11 12	1 2 3 4 5 6 7 8 9 10 11 12	1 2 3 4 5 6 7 8 9 10 11 12
DATA COLLECTION			
ENGAGEMENT & PREDESIGN			
	DESIGN ALTERNATIVES & REFINEMENT		

LAKE FOREST PARK LAKEFRONT PARK

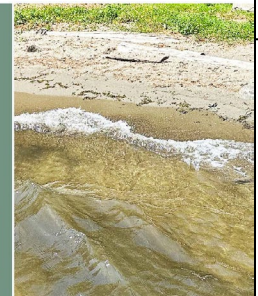
Save the date!
Join the Community Workshop on Wednesday, October 25th at Lake Forest Park City Hall.

This will be an open house event with activities for all ages. Stop by anytime between 5:30PM - 7:30PM.

Learn more about the project, take a virtual tour, and take the community survey at the project website:



lfplakefrontpark.com



[Welcome](#)
[Background](#)
[Virtual Tour](#)
[City Website](#)
[Calendar & Events](#)

Welcome to the lakefront improvement project online open house website!

LAKE FOREST PARK

LAKEFRONT PARK PROPERTY

A new community space and park is coming to the city's lakefront.

Submit your responses by November 1!

Share your ideas and vision for the future of the lakefront by taking the survey below. This survey will close November 1.



Select Language ▼

Submit your responses by November 1!

Share your ideas and vision for the future of the lakefront by taking the survey below. This survey will close November 1.

Survey results

Survey active Sept 8 – Nov 1

13 questions

- 7 project related
- 6 demographic

493 respondents



Lakefront Park Property Community Survey

About the project

Lake Forest Park's city-owned lakefront includes Lyon Creek Waterfront Preserve and two newly acquired parcels located northeast of the existing preserve. The design effort will focus on the two new parcels and may include selective improvements to unify the new lots with Lyon Creek Waterfront Preserve. A map of the project area is provided below.

OK

Survey results

Community priorities and park program

Community's top 3 priorities when imaging the future lakefront: (classified as “Very Important”)

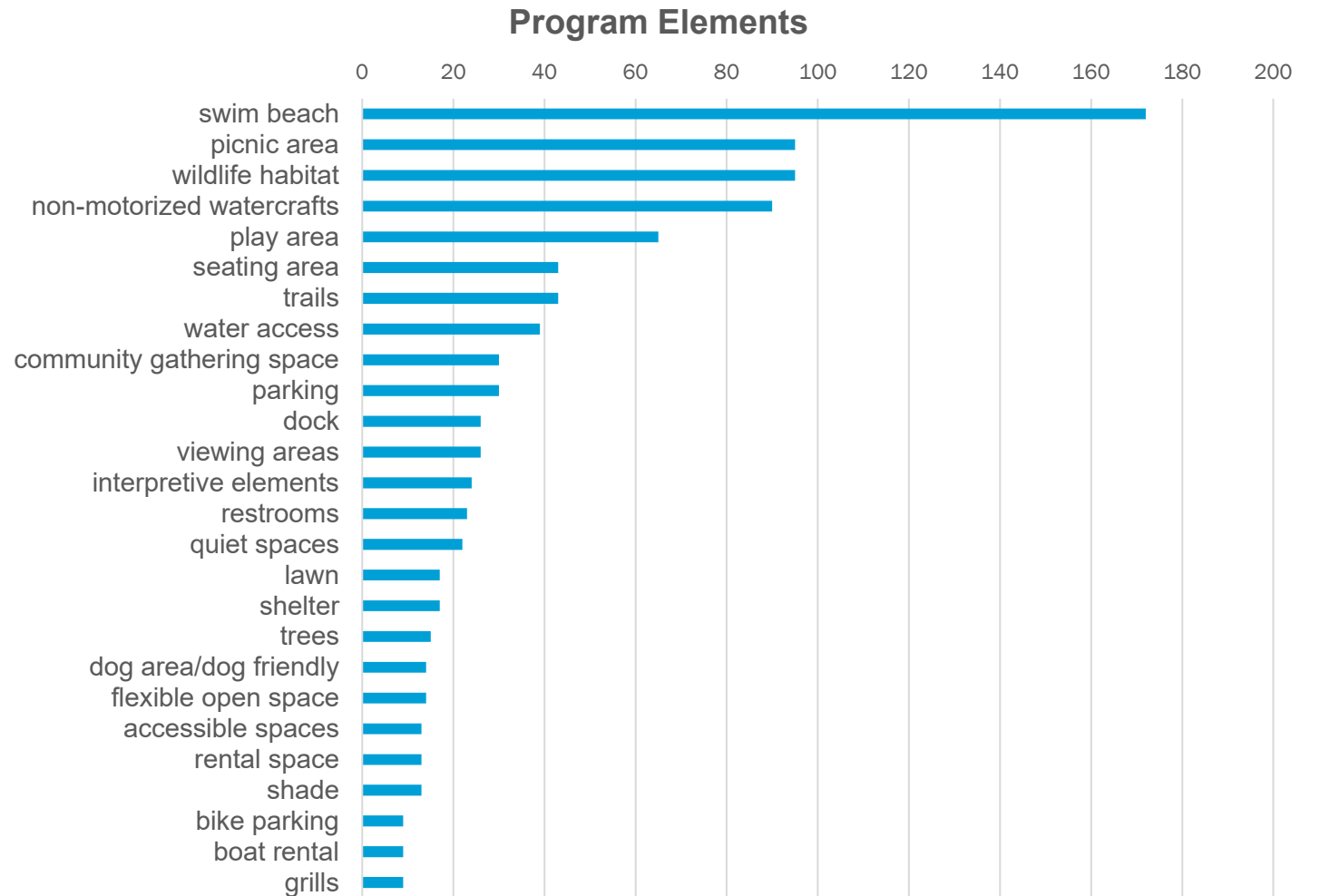
1. Offers a range of recreational activities, such as swimming, paddling, play (60% of respondents)
2. Promotes lake health and shoreline stewardship (57% of respondents)
3. Provides healthy habitat for fish and wildlife (56% of respondents)

Survey results

Community priorities and park program

Findings based on analysis of survey comments about desired programming and facilities

Top park program elements and activities based on survey responses:



Community responses about modes and routes of travel:

Survey results

Modes and routes of travel

- Walking top response
- Burke Gillman Trail as preferred walking/biking route
- Multi-modal trips
- Driving with reference to parking at both City Hall and onsite



Survey results

Relationship to Lyon Creek
Waterfront Preserve

“What do you like?” themes:

1. Calm, peaceful and quiet area with natural beauty
2. A space for nature that promotes health of Lyon Creek
3. Great area for viewing the lake, the trees, and wildlife

“What could be improved?” themes:

1. The space lacks water access and active uses
2. The beach and mouth of Lyon Creek are impacted by people and dogs, possibly harming the ecosystem
3. Vegetation is overgrown with invasive vegetation, impacting views and access to spaces

Many respondents have not been to the park because they didn't know it was there.

Survey results

Placemaking and interpretation

- Analysis of free responses supports passive use community park

Community sentiment on interest and significance of the lakefront: (classified as “Very Interesting or Significant”)

1. Ecology, including ecosystem functions, native plants, and wildlife (44% of respondents)
2. Indigenous relationships with the site and area (35% of respondents)
3. The history of the site and area, including pre- and post-settlement history (28% of respondents)

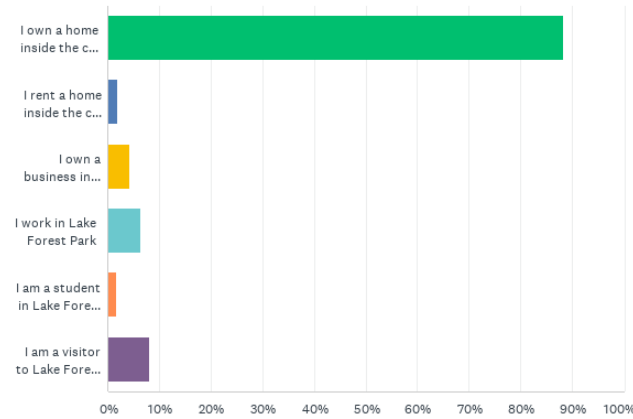


Survey results

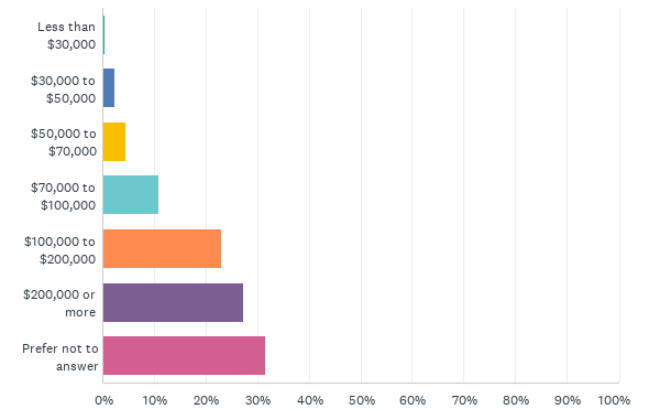
Demographics summary

- Self-reported, optional

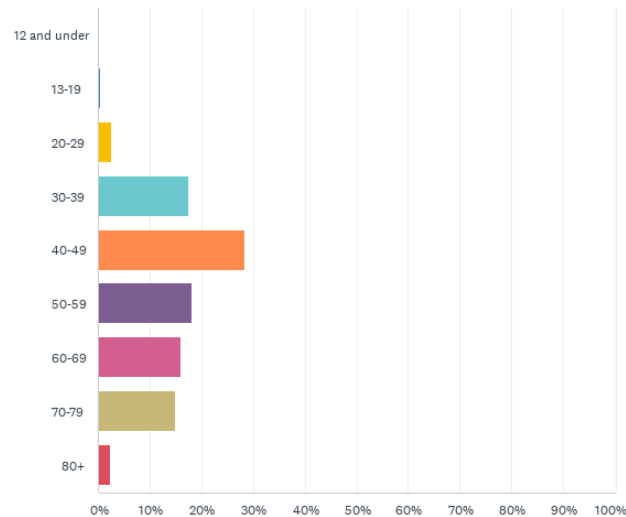
Q7 What is your relationship to Lake Forest Park? (check all that apply)



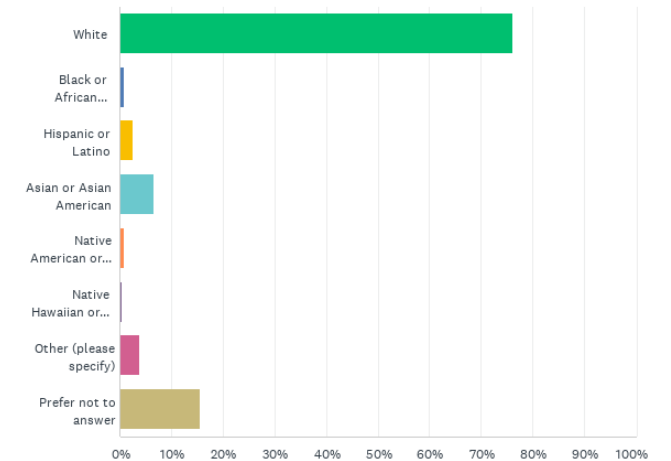
Q13 What is your household income? (choose one)



Q9 What is your age? (choose one)



Q10 Do you identify as any of the following groups? (choose all that apply)



Community charrette

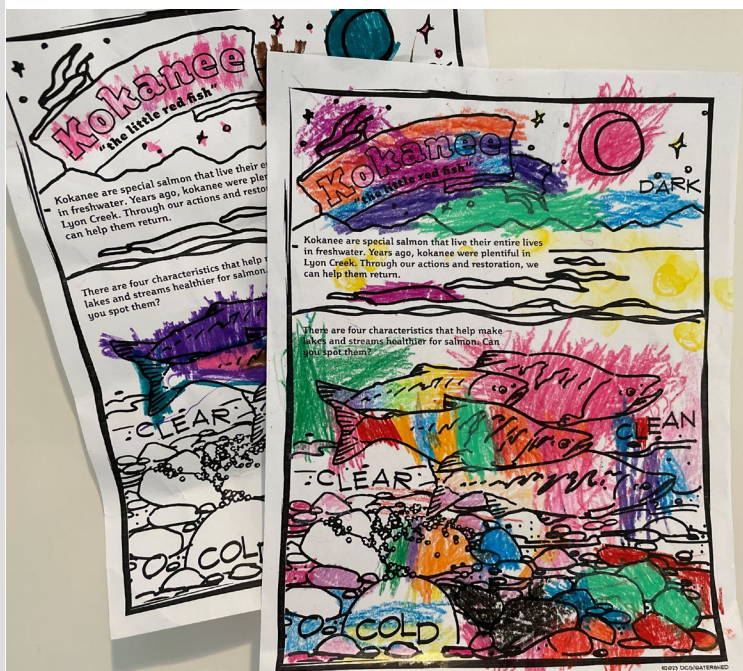
80 attendees signed-in

Estimated 100 attendees

More than 500 unique comments and feedback points

Youth to adult participation

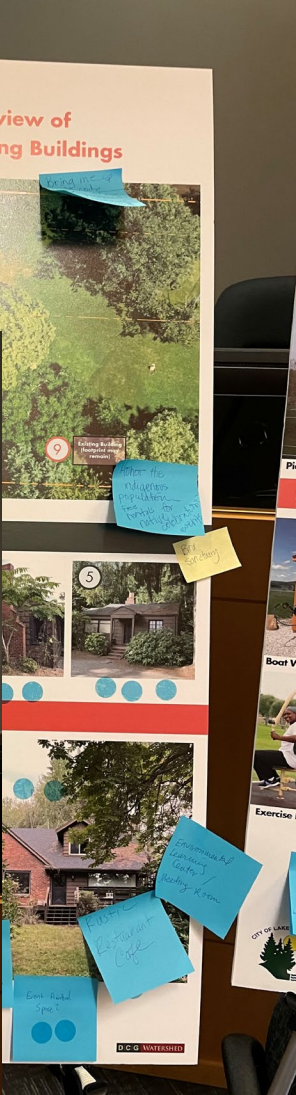
Majority positive feedback



Community charrette

Five exercises, plus slideshow of site photos

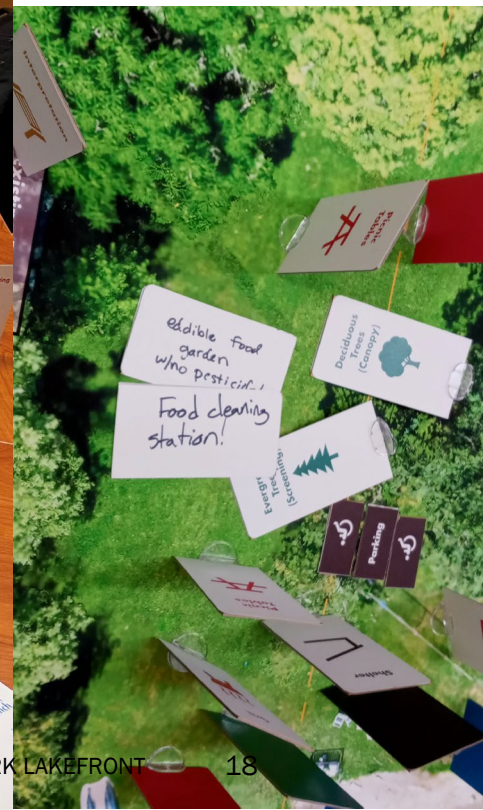
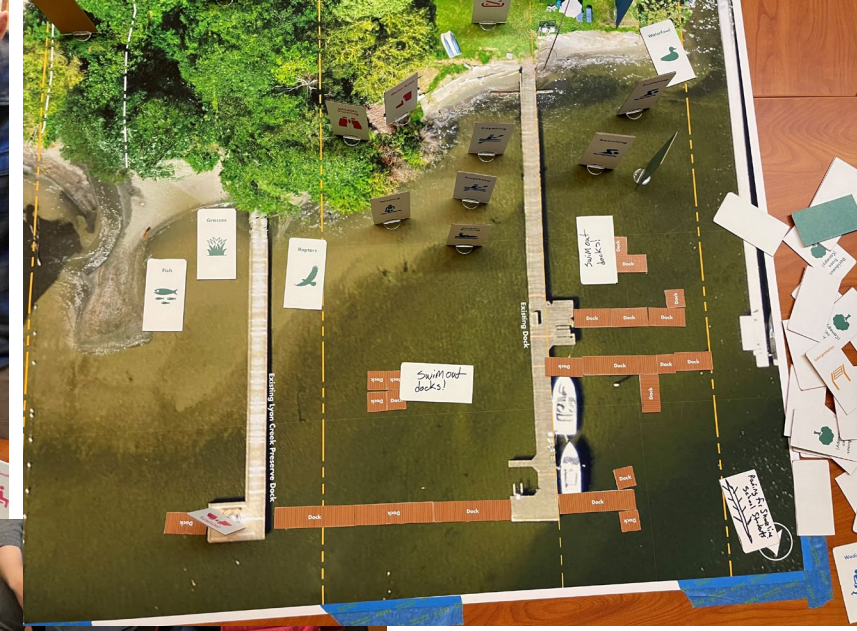
- Vision prompt
- Coloring activity
- Building-focused architectural exercise
- Access and circulation exercise
- Site diagram and design programming exercise



Community charrette

Site diagram and design programming exercise

- Tiles representing potential uses, informed from survey results prior to meeting (~380 surveys)
- Blank tiles to invite new ideas
- Scale tiles representing accessible and standard parking stalls and dock sections
- Discussion between community members and with design team members



Community charrette

Community sentiment trends observed:

- Continued and increased protection of the waterfront preserve
- Range of passive activities on new acquisition parcels
- Less is more strategy to development, especially at waterfront
- Development should promote ecosystem, habitat, and wildlife
- Walking and biking infrastructure strongly desired
- Some parking should be provided
- Preference for flexible use of outdoor spaces and buildings
- Accessibility and inclusivity, serve all ages and abilities
- Sensitive to potential impacts to neighbors and Beach Drive

Next steps

Concept Design (October to January):

- Design programming
- Alternatives development
- Feasibility analysis
- Permit mapping
- Cost estimation

Milestone:

- November 17 (target) – Delivery of Interpretive Plan
- January 23, PRAB meeting 2 – Presentation of conceptual design and design alternates

Next steps

Alternatives Analysis (January to March):

- Presentation of alternatives
- Refinement
- Selection and refinement of preferred design

Milestones:

- February 15 (target week) – Community Meeting 2 – Presentation of design alternatives
- March 14 – City Council working session – Presentation of design alternatives, inc. PRAB and community feedback and preferences, preferred design selection
- March 31 (target) – Preferred design selected

Next steps

Schematic Design (March to June):

- Advance preferred design
- Preparation of schematic design package
 - Schematic design concepts
 - Schematic design report, including updated permitting and costs

Milestones:

- April 23 – PRAB meeting 3 – Schematic design review
- May 1 – 2023 RCO funding application deadline
- May 9 – City Council working session – Presentation of schematic design package
- May 27 (target) – Delivery of schematic design package

Next steps

Design Development & Permit Submittal – *targeting NTP in June/July 2024*

- Contracting
- 30% design development
- Permitting

Milestones:

- May 27 (target) – DD scope to City
- June – DD scope to Council
- Late September – Delivery of 30% DD package
- End of September 2024 – Submit for permits

Next steps

Construction Documentation & Permit Review – *targeting September – December 2025*

Bid Support and Coordination – *targeting December 2025 – March 2026*

Construction – *target April – September 2026*

Post Occupancy / Site Commissioning – *estimated October 2026 – October 2027*



Lake Forest Park Lakefront Improvements

Design, Engineering, Environmental, and Permitting

D|C|G

WATERSHED