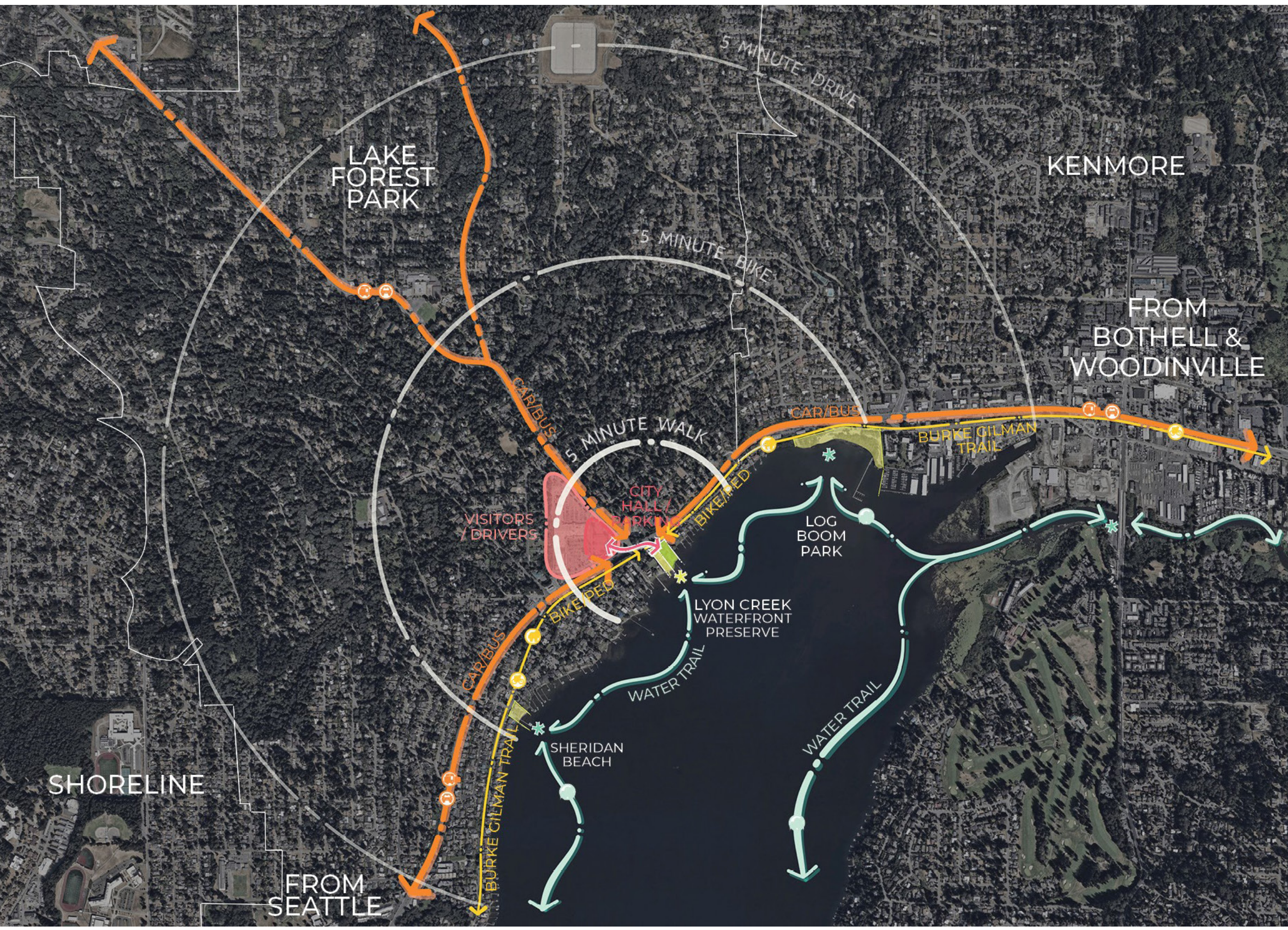


LAKE FOREST PARK

LAKEFRONT PARK

You can shape the vision for Lake Forest Park's public lakefront.



The Lake Forest Park Mayor and City Council have established improving public waterfront access as a high priority. This project was identified as a high priority in the City's Parks, Recreation, Open Space and Trails (PROST) plan.

The City of Lake Forest Park has acquired 2 parcels, totaling 1.91-acres, on the shores of Lake Washington. This land is located near the Town Center, Burke-Gilman Trail, and adjacent to the scenic Lyon Creek Waterfront Preserve. As of now, the City lacks public water access, and this project aims to provide the community with active water recreation opportunities in a beautiful area.

This multi-year effort requires community participation and input. **Look out for opportunities to get involved or sign up at the website below to receive email updates.**

lfplakefrontpark.com



Top: Context map showing project location and adjacent vehicular, pedestrian, and bicycle routes.
Bottom: Aerial photo of project location facing east.

Estimated Project Schedule

